

7270 Trade Street, Suite 102, San Diego, CA 92121

Tel: (858)412-5988 Fax: (858)368-8716

Technical Supports: [supports@ixcellsbiotech.com](mailto:supports@ixcellsbiotech.com)

Orders: [orders@ixcellsbiotech.com](mailto:orders@ixcellsbiotech.com)

## Human Sensory Neurons (iPSC-derived, Normal)

<b>Catalog Number</b>	40HU-013-2M	<b>Packaging Size</b>	2.0 million cells/vial
<b>Species</b>	<i>Homo sapiens</i>	<b>Lot Number</b>	400402-2M

### Donor Information:

This lot of human sensory neurons is derived from normal hiPSC line obtained from 53 years old Asian Male.

### QA/QC Tests:

Test	Results
1. Number of viable cells	≥ 2.0 million
2. Purity by morphology and antibody staining	≥ 80% cells are BRN3A positive, seven days after recovery ≥ 90% cells are MAP2 positive, seven days after recovery
3. Bacteria, Yeast, Mycoplasma, Other Fungi	Negative
4. HIV, HBV, HCV	Negative

*These cells were obtained through an IRB approved donor program.*

**Recommended Storage Condition:** Upon arrival, please use product immediately or keep in liquid nitrogen storage. Products stored in liquid nitrogen should maintain above specifications for up to six months from the date of shipment.

Cells are for *in vitro* research purposes only and are not intended for use in humans.

**WARNING:** in accordance with OSHA and CDC guidelines, all specimens should be handled as though they contain agents infectious to humans and follow appropriate safety control procedures to ensure the safety of using these products.

Approved By:



7270 Trade Street, Suite 102, San Diego, CA 92121

Tel: (858)412-5988 Fax: (858)368-8716

Technical Supports: [supports@ixcellsbiotech.com](mailto:supports@ixcellsbiotech.com)

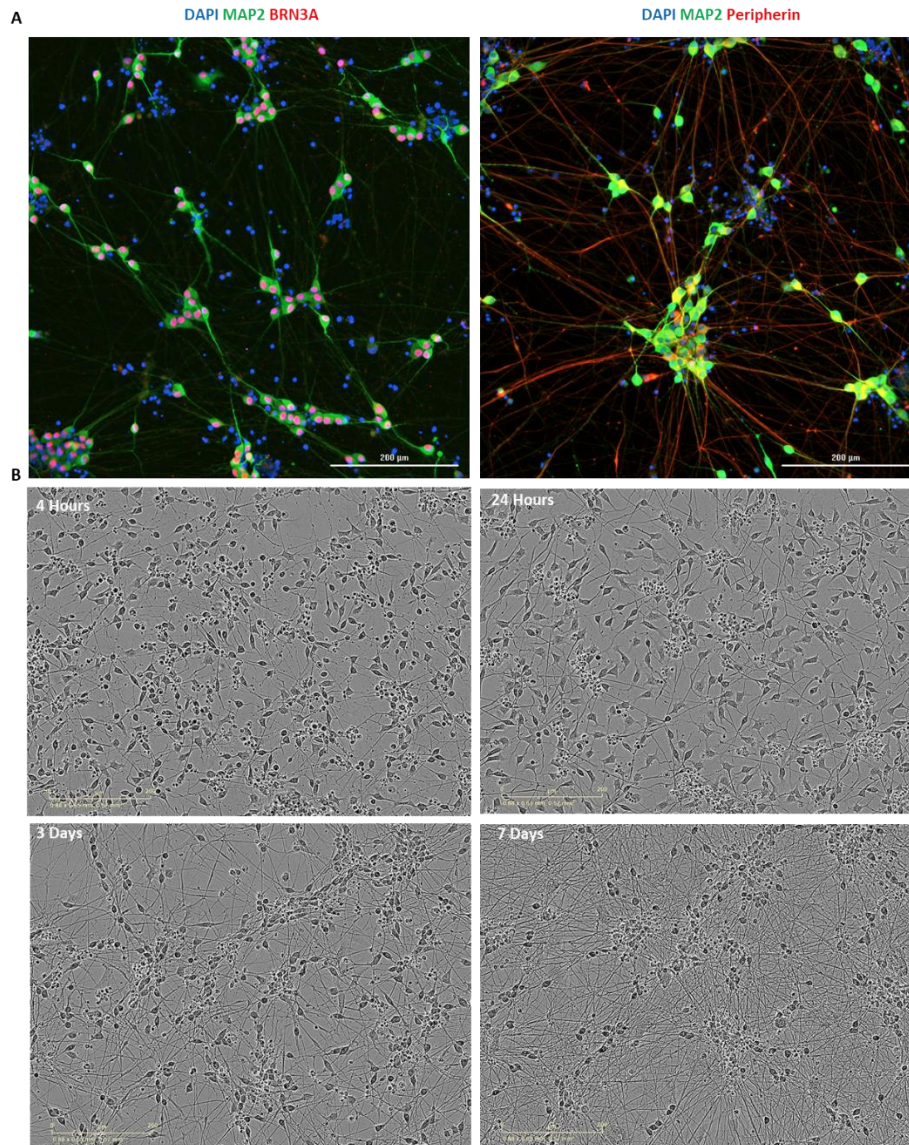
Orders: [orders@ixcellsbiotech.com](mailto:orders@ixcellsbiotech.com)

## Image Analysis Report

**Product Name:** Human Sensory Neurons (iPSC-derived, Normal)

**Catalog Number:** 40HU-013-2M

**Lot Number:** 400402-2M



**Figure 1:** (A) Cells were recovered and cultured at the density of 200,000 on PLO/Laminin coated 48-well cell culture plates for 7 days. Cells were stained with MAP2/BRN3A and MAP2/Peripherin (Day 7). (B) The cells were seeded at the density of 200,000 on PLO/Laminin coated 48-well cell culture plates and morphology was monitored in real-time using Essen BioScience IncuCyte® S3. The phase contrast images at 4 hours, 24 hours, 3 days, and 7 days post thawing are shown. Scale bar: 200 μm.