

Human Sensory Neurons (iPSC-derived, Normal)

SKU: 40HU-013

PRODUCT DESCRIPTION

Sensory neurons play a crucial role in the detection and response to different types of sensory stimuli, such as touch, temperature, and pain. As one of the most significant neuronal subtypes in the human peripheral nervous system, they form neuronal-glia networks that are responsible for a variety of motor and sensory mediated functions [1]. Dysfunction of sensory neurons can lead to various neurological disorders such as pain, multiple sclerosis (MS), amyotrophic lateral sclerosis (ALS), and problems with mechano- or temperature perception [2]. Understanding the biology of iPSC-derived sensory neurons can help with new treatments for these disorders, as well as improve our understanding of normal sensory function [3].

Product Details

Catalog Number: 40HU-013

Organism: *Homo Sapiens*, Human

Cell Type: Sensory Neuron

Tissue: Human Brain

Disease: Normal

Package Size: 1 x 10⁶ cells/vial, 2 x 10⁶ cells/vial

Passage Number: P0

Growth Properties: Adherent

Associated Media: Sensory Neuron Maintenance Medium (SKU: MD-0114-100ML)

Recovery Supplement (SKU: MD-0110-20µL)

Y27632 (SKU: MD-0025-2MG)

Storage Conditions & Shipment

Product Format/Shipped: Cryopreserved

Storage: Liquid Nitrogen

PRODUCT SHEET

For Research Use Only

iXCells Biotechnologies USA, Inc.
United States

www.ixcellsbiotech.com

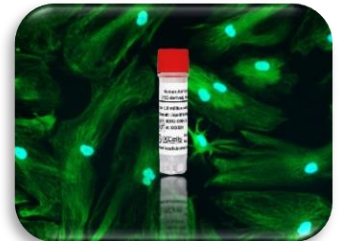
Customer Support

E. supports@ixcellsbiotech.com

E. orders@ixcellsbiotech.com

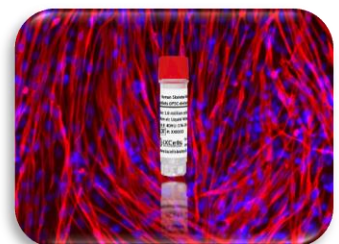
P. +1 (858) 412 5988

RELATED PRODUCTS



Human Astrocytes (iPSC-derived, Normal)

SKU: 40HU-008



Human Skeletal Muscle Myoblasts (iPSC-derived, Normal)

SKU: 40HU-176

Overview of Human Sensory Neurons (iPSC-derived)
Overview of Human Sensory Neurons (iPSC-derived)

iXCells Biotechnologies is proud to provide fully differentiated and functional human iPSC-derived human sensory neurons that display typical neuronal morphology and express key markers e.g., Peripherin, BRN3A (Figure 1) when cultured in the Human Sensory Neuron Maintenance Medium (Cat# MD-0114-100ML). In addition, our iPSC-derived sensory neurons can also be co-cultured with glia or other cell types for drug screening platforms.

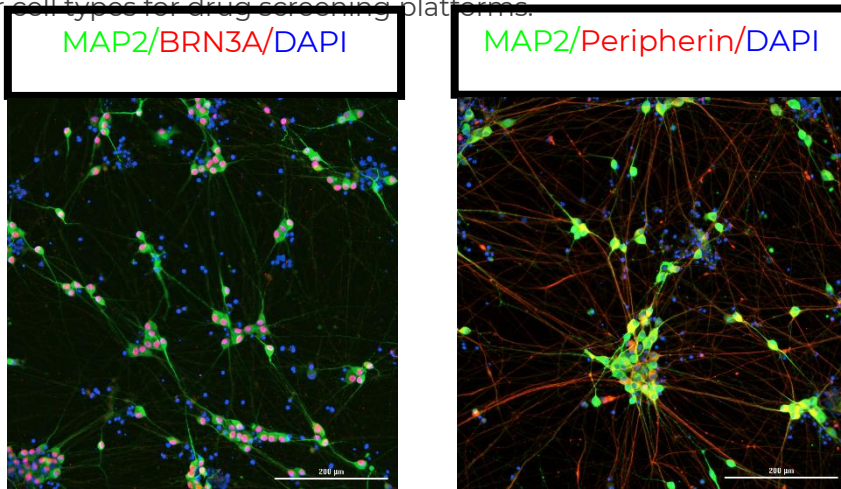


Figure 1. Immunostaining of iPSC-derived sensory neurons expressing MAP2 (green), BRN3A (red), Peripherin (red) 7 days 200 µm.

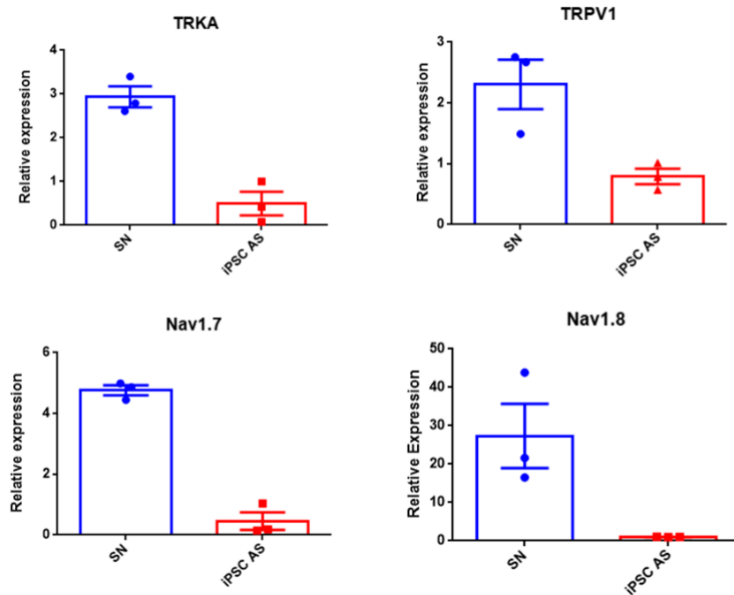


Figure 2. Gene expression values for NTRK1 (TRKA), TRPV1, SCN9A (Nav1.7) and SCN10A (Nav1.8) from 3 weeks post-thaw sensory neurons and control (iPSC-derived Astrocytes). Results are graphed as mean ± SEMs.

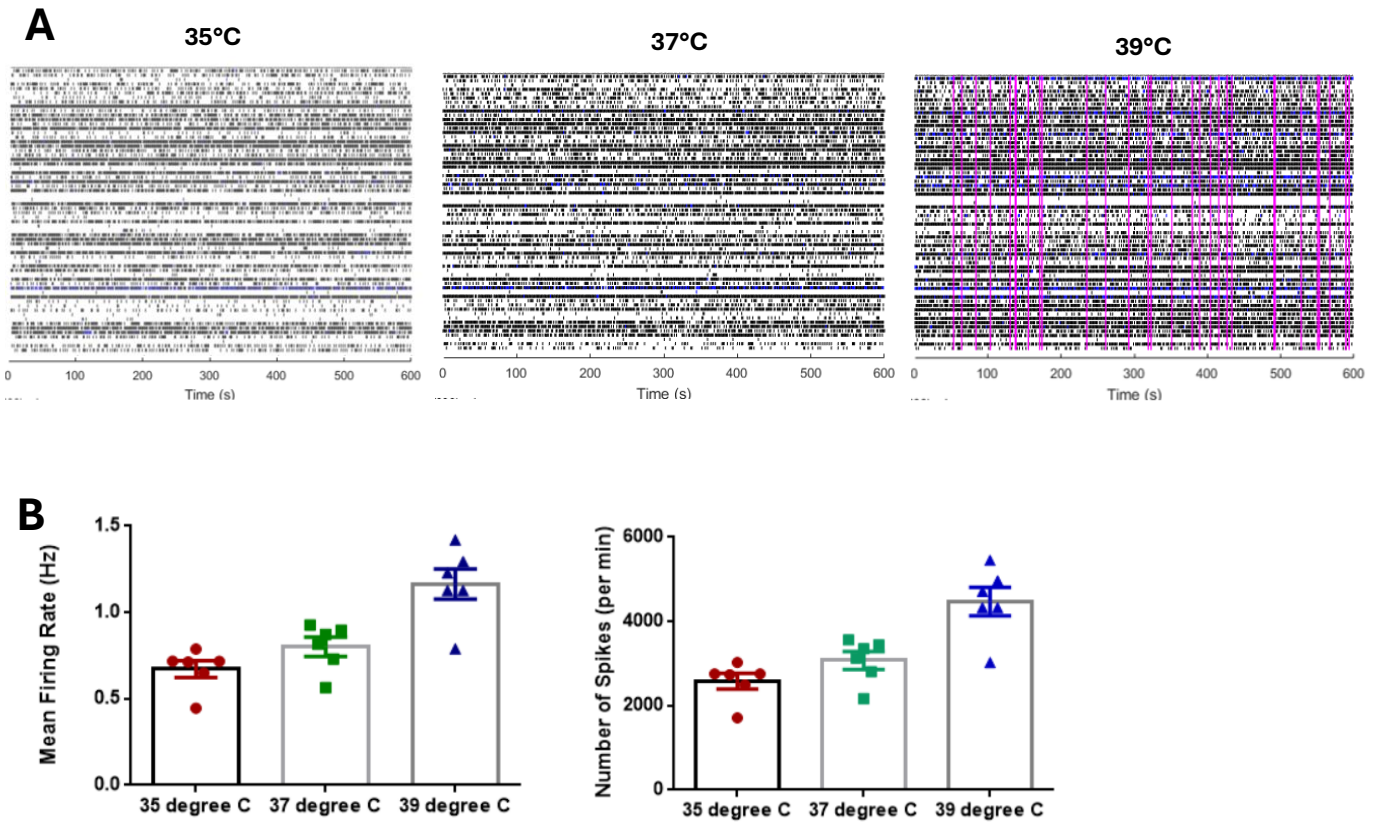


Figure 3. (A) Example raster plot showing spikes (black lines) and network bursts (pink lines) at different temperatures in the MEA for sensory neurons grown for 2 weeks. (B) The electrical parameters were measured in the MEA over different temperatures and the results are graphed as mean \pm SEM for mean firing rate.

QuickStart Guide – Protocols

Monoculture of hiPSC-Derived Sensory Neurons

The following protocol is based on 48-well plate format

1. Prepare the coating vessel before thawing the cells. Coated plate preparation: coat the plates with Poly-D-lysine solution (1.0 mg/mL; Sigma-Aldrich, Cat# A-003-E) in water overnight in the incubator, wash twice with water the next day and coat the plates with Matrigel GFR membrane matrix (Corning, Cat# 354230) to 80 µg/mL with DMEM/F12 (Thermo Fisher, Cat#11320082) medium for additional hour in the incubator. Do not let dry at any stage.

Note: Upon receipt of the frozen cells, it is recommended to thaw the cells and initiate the culture immediately to retain the highest cell viability.

2. To thaw the cells, put the vial in 37°C water bath with gentle agitation for ~1-2 minutes. Keep the cap out of water to minimize the risk of contamination.
3. Pipette the cells into a 15 mL conical tube with 5 mL **Human Sensory Neuron Maintenance Medium (Cat# MD-0114-100ML)**.
4. Centrifuge at 300xg for 5 minutes at room temperature.
5. In the meantime, calculate the volume of cell suspension needed to plate the neurons and prepare the media by adding the **Recovery Supplement** (MD-0110-20µL; 1:2000 dilution) and 10µM **Y27632** (MD-0025-2MG) to the Human Sensory Neuron Maintenance Medium, e.g. for 5 mL of Human Sensory Neuron Maintenance Medium add 2.5 µL of Recovery Supplement.
6. Remove the supernatant and re-suspend the cells in Human Sensory Neuron Maintenance Medium + Recovery Supplement + Y27632. Recovery supplement and Y27632 should be removed the next day by complete medium change.
7. Seed the cells on precoated plate at the desired density. Incubate in 37°C CO₂ incubator overnight.

Note: We recommend seeding 100K-200K cells per cm² depending on the application. Cell debris may be observed after cell recovery. Refer to the CoA of each lot to determine the seeding density for your experiment.

8. Perform a full media change after 24h to fully remove recovery supplement and Y27632 from the culture with the Human Sensory Neuron Maintenance Medium.
9. Perform half medium change every 3-4 days. Do this by removing half of the media in the well first, and adding the same amount of fresh media afterwards. Most of the cells should express high levels of MAP2 and Peripherin, 5-7 days after thaw.

References

- [1] Basbaum AI, Bautista DM, Scherrer G, Julius D. Cellular and molecular mechanisms of pain. *Cell*. 2009 16;139:267-84.
- [2] Fargeot G, Echaniz-Laguna A. Sensory neuronopathies: new genes, new antibodies and new concepts. *J Neurol Neurosurg Psychiatry*. 2021 9;jnnp-2020-325536
- [3] Lampert A, Bennett DL, McDermott LA, Neureiter A, Eberhardt E, Winner B, Zenke M. Human sensory neurons derived from pluripotent stem cells for disease modelling and personalized medicine. *Neurobiol Pain*. 2020 18;8:100055.
-

Disclaimers

This product is for laboratory research purposes only and should not be used in humans. While iXCells Biotechnologies strives to provide accurate and current information on this product sheet, we do not guarantee its accuracy. Citations from scientific literature and patents are for informational purposes and may not be confirmed as accurate.

You are responsible for the safe storage, handling, and usage of this product, and iXCells Biotechnologies is not liable for any damages or injuries resulting from its receipt or use. While we make reasonable efforts to ensure the authenticity and reliability of deposited strains, we are not liable for damages arising from misidentification or misrepresentation of cultures.

Copyright

© iXCells Biotechnologies USA, Inc. 2023. All rights reserved.

Contact Information & Customer Support

iXCells Biotechnologies USA, Inc.

United States

www.ixcellsbiotech.com

Technical Support. supports@ixcellsbiotech.com

Product Sales. orders@ixcellsbiotech.com or contact your local distributor

US Phone. +1 (858) 412 5988